
MARCH 2022

Illinois Sign Association **Membership Directory**

Featuring...

- **Sign Companies and Allied Trade Member's Contact Information**
- **2022 Board of Directors Leadership Roster**
- **2022 Industry Partners**



WORKING TOGETHER



ISA Board of Directors

2021 - 2022 President



JOHN C. JOHNSON
C. Johnson Sign Company
9615 Waveland Avenue
Franklin Park, IL 60131-1747
847-678-2092
www.cjohnsonsignco.com
john@cjohnsonsignco.com

Vice President



HENRY VAN DE WERKEN
Miratec Systems
640 Olive St
St Paul, MN 55130
henryv@miratecsystems.com
630-864-7491

ANDREW CARBY
Prairie Signs, Inc.
1215 Warriner
Normal, IL 61761
309-452-0463
www.prairiesigns.com
acarby@prairiesigns.com

Secretary/Treasurer



JASON TOMPKINS
Bendsen Signs & Graphics
2901 North Woodford Street
Decatur, IL 62526-4715
217-877-2345
www.bendsensigns.com
jt@bsg1946.com

Past President



DIRECTORS



BRANDON BENDER
Electro-Matic Visual, Inc.
23660 Industrial Park Drive
Farmington Hills, MI 48335
248-622-3684
www.empvisualsolutions.com
bhbender@electro-matic.com

312-237-0573



CHAD ENGSTROM
Optec Displays, Inc.
1700 S. De Soto Place
Ontario, CA 91761
800.876.1668 x258
626.252.8333
www.optec.com

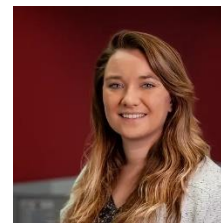
TABITHA BOWEN
All-Right Signs
3628 Union Avenue
Steger, IL 60417
708-754-6366
www.allrightsign.com
TBowen@allrightsign.com



KEVIN LASKA
North Shore Sign
1925 Industrial Drive
Libertyville, IL 60048
847-816-7020
www.northshoresigns.com
kevin@northshoresigns.com



DAN BROWN
Altec Industries, Inc.
125 N. Sheridan Ave
Indianapolis, IN 46219
www.altec.com
Dan.Brown@altec.com



FAYE ROWELL
Watchfire Signs
P.O. Box 850
Danville, IL 61832
www.watchfiresigns.com
faye.rowell@watchfiresigns.com

BARRY COX
Turnroth Sign Company, Inc.
1207 E. Rock Falls Road
Rock Falls, IL 61071
815-625-1155
www.turnrothsign.com
turnrothsignbcox@yahoo.com



SARA WERKMAN
Van Bruggen Signs, Inc.
13401 Southwest Hwy.
Orland Park, IL 60462
708-448-0826
www.vbsign.com
sara@vbsign.com



2021 – 2022 ILLINOIS SIGN ASSOCIATION INDUSTRY PARTNERS

.....PLATINUM SPONSORS.....



.....GOLD SPONSORS.....



.....SILVER SPONSORS.....



SIGN COMPANIES

ACE SIGN CO.

Todd Bringuet (PRES)
2540 South First Street
Springfield, IL 62704
217-522-8417
todd@acesignco.com
www.acesignco.com



ALL-RIGHT SIGN, INC.

Teresa Bowen (PRES)
3628 Union Avenue
Steger, IL 60417
708-754-6366
allrightsign@comcast.net
www.allrightsign.com



Service available: Sign Installation, Custom Manufactured Signage, Vehicle Graphics, Sign Service/Repair, & Lot-lighting
Equipment: 60' – 85' Elliot Booms, 17 Ton Terex Crane with 120' Reach, Excavator, Bobcat, Auger
Service area: All Chicago-land Area & Northwest Indiana

THE AUBREY SIGN COMPANY

Michael Hoffer (TITLE)
1847 Suncast Lane
Batavia, IL 60510
630-482-9901/Fax 630-482-9906
aubreysigns@sbcglobal.net
www.aubreysigns.com



Service available: Design, fabricate, permit, and install all of commercial signage (illuminated and non-illuminated). format printing. All electrical signs are UL listed. Licensed electricians. Non-union.
Equipment: Two large format Roland eco-solvent printers, laminator, router, service/installation trucks.
Service area: Greater Chicago area

types
Large

BENDSEN SIGNS & GRAPHICS, INC.

Tom Pistorius (PRES)
tp@bsg1946.com
Jason Tompkins (GENL MGR)
jt@bsg1946.com
1506 East McBride Avenue
Decatur, IL 62526-4715
217-877-2345/Fax 217-877-2347
www.bsg1946.com



Service available: Designers, builders and erectors of custom electric sign displays, complete erection, and maintenance services.
Equipment: 100' Manitex Crane trucks with remote controls, work baskets, ladders and auxiliary load line; 65' Wilkie crane truck, 55' Wilkie service truck, 35' service van, 60' & 43' Elliot
Service area: Central Illinois

SIGN COMPANIES

C. JOHNSON SIGN COMPANY

John C. Johnson (Owner)
john@cjohnsonsignco.com
Kent A. Stone (GENL MGR)
kent@cjohnsonsignco.com
9615 Waveland Avenue
Franklin Park, IL 60131-1747
847-678-2092/Fax 847-671-1599
www.cjohnsonsignco.com



Service available: Electronic message boards, custom electric signs, silk screening, sign painting, erection and maintenance service.

Equipment: 3 service trucks

Service area: Chicago metropolitan area and Milwaukee, WI

CHESNUT SIGN COMPANY INC.

Donovan Chesnut (PRES)
Donovan@chesnutsigns.com
971 NE Broadway Avenue
Des Moines, IA 50313
515-243-8112
Fax 515-243-8146
www.chesnutsigns.com



CHICAGO SIGN AND LIGHT CO.

John Doyle (PRES)
James Kopke (COS)
sales@chicagosignandlight.com
chicagosigns@aol.com
26W535 Saint Charles Road
Carol Stream, IL 60188
630-407-0802



DESIGNS & SIGNS BY ANDERSON

Gene Anderson (PRES)
gene@signsbyanderson.com
*104 West Madison
Ottawa, IL 61350
815-434-7340
signs@signsbyanderson.com
Doug Beckman (VP)
*222 3rd Street
LaSalle, IL 61301
815-223-6087
*1602 N 18th Road
Streator, IL 61364
815-672-6087
www.signsbyanderson.com



Services available: Design, Manufacture, Permitting, Installation and Maintenance of all types of signage.

Equipment: Elliott 85' – crane/bucket, Wilkie 52' crane/bucket, Wilkie 35' bucket truck, van, (2) pick-up trucks, 18' trailer, Matthews mixing station, JBL spray booth, 4' x 8' CNC router, neon lab, metal shear & brake, Mig/Tig welder, bandsaw, cutoff saw, extrusion saw, panel saw, 30" Graphtec plotter, Roland VP540 printer/plotter, 60" laminator, Gerber Edge

Service area: 60 Mile Radius

SIGN COMPANIES

DIAMOND DESIGN and ENGRAVING LLC

Richard Oppermann
rick@ddande.com
9038 Joey Drive
Niles, IL 60714
847-530-6325
www.ddande.com



Service available: Large Format Printing, Promotional Products, Corporate Awards, Engraving and Sandcarving
Equipment: Laser and Rotary Engravers, MUTOH large format printers, IKONICS sandcarving
Service area: Northern Illinois and the Chicagoland area.

DIGITALARTZ

Chris Elb (PRES/GEO)
Jenny Ferguson (LEAD DESIGNER)
Nick Schmollenger (Production Operator)
Amelia Carole (Assistant Project Manager)
chris@digitalartz.us
188 Woodcrest, Drive
Highland, IL 62249
618-651-1500
www.digitalartz.us



Service available: Digital Printing, Design, Installation, Consulting, Planning, Layout, Sign Building, and Service
Equipment: Flatbed printing, Roll printing, Vehicle Graphics, Vinyl Cutting Machines
Service area: Illinois, Missouri, Indiana, Midwest

DOYLE SIGNS, INC.

Terrence Doyle (PRES)
Patrick Doyle (EXEC VP)
Joseph Doyle (VP)
Carol Doyle (SEC)
info@doylesigns.com
232 Interstate Road
Addison, IL 60101-4514
630-543-9490/Fax 630-543-9493
www.doylesigns.com



Service available: Design, manufacture, installation and maintenance of interior and exterior signs, neon & LED letters, awnings, large format printing, electronic message centers, lot lighting and more.
Equipment: 7 service ladders to 60'; 8 installation rigs to 100' and miscellaneous vehicles and trailers
Service area: 100-mile radius of Chicago

EBERHART SIGN AND LIGHTING COMPANY

Sue Schmidt (PRES)
sue.schmidt@eberhartsigns.net
104 First Avenue
Edwardsville, IL 62025
618-656-7256/Fax 618-656-7257
www.eberhartsigns.net



Service available: Sign & lighting installation and service.
Equipment: : 2 bucket trucks (1-60' and 1-43'), bobcat with 9' backhoe attachment, 54" wide format high resolution printer
Service area: St. Louis metro area, IL and MO (50 mile radius)

SIGN COMPANIES

ELEVATE SIGN GROUP (formally COMET NEON INC.)

Piotr Wolak (PRES)

sales@cometneon.com

1120 N. Ridge Ave Lombard IL 60148

630-656-1085

<https://www.elevatesigngroup.com/>



FAST SIGNS - SOUTH LOOP

Tony McHale (Owner)

tony.mchale@fastsign.com

1315 S Michigan Ave.

Chicago, IL 60605

O:312-934-2001

M:708-557-5686

www.fastsigns.com/2301-s-loop-chicago-il



FLASHTRIC SIGN INC. (Division of Turk Electric Sign Co.)

Angela Demir (EXEC VP)

angelad@flashtric.com

3434 North Cicero Avenue

Chicago, IL 60641

773-736-9300/Fax 773-282-5477

www.flashtric.com

www.turkelectricsign.com



Service available: Mon-Fri and 24hr emergency services

Equipment: Crane/ladder service trucks, dump truck, bobcat, augers, etc.

Service area: Chicagoland area 50-mile radius

FOPPE VISUAL COMMUNICATIONS

JoAnn Foppe (PRES)

joann@foppevisual.com

809 Broadway

Highland, IL 62249

618-654-8600

www.foppevisual.com



Service available:

Equipment:

Service area:

GRAPHIC IMAGE CORPORATION

Frankie Markasovic (VP)

10500 W 163rd Pl

Orland Park, IL 60467

312-829-7800

frankie@graphicimagecorp.com

www.graphicimagecorp.com



SIGN COMPANIES

G Z SIGN DESIGNS, INC.

Iolanda Dianne Molnar
gzsigndesigns@sbcglobal.net
912 Central Avenue
Roselle, IL 60172
630-307-7446/Fax 630-307-9031
www.gzsigndesigns.com

Service available: Vehicle wraps, banners, magnets, business cards, digital printing & laminating & much more.
Equipment: Large format print and cut Roland Systems
Service area: Call to request service...will ship anywhere!



large format

H & H LIGHTING MAINTENANCE & SIGNS

Mike Smallberger (DIR)
msmallberger@lightsbyhh.com
110 W. Main Street
Elmwood, IL 61529
309-360-3739/Fax 309-742-7071
www.hhlightingmaintenance.com

Service available: EMB signage, Sign repair, sign installation, fabrication & design. LED parking lot pole lights, security lights, interior lighting, canopy & warehouse lighting. Program ally of Ameren Illinois energy efficiency programs.
Equipment: Bucket trucks up to 45', service vans.
Service area: 75-mile radius



HONEGGER SIGN CO.

Andrew Honegger (OWNER/PRES)
drew@honeggersign.com
6107 Washington St
Bartonville, IL 61607
309-697-4667
www.honeggersign.com

Service available:
Equipment:
Service area:



I.D. SIGNS

Alison Jackson (PRES/OWNER)
sales@idsignsil.com
3555 Ogden Road
Springfield, IL 62711
217-793-2200/Fax 217-793-2258
www.idsignsil.com

Service available: Full-service Sign Company – design, production, installation, and service
Equipment: 2-65' crane/bucket
Service area: 60-mile radius



SIGN COMPANIES

INDEPENDENT OUTDOOR

Rick Wood (PRES)

rwood@ioltd.net

5009 Chase Avenue

PO Box 273

Downers Grove, IL 60515

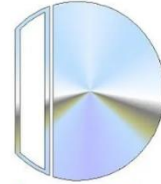
630-960-2460/Fax 630-960-3095

www.independentoutdoor.net

Service available:

Equipment:

Service area:



Independent Outdoor, Ltd.

SIGNS • GRAPHICS • DESIGN

A Complete Sign Provider

J & S ELECTRIC AND SIGN, INC.

Tracy Stoll (OWNER)

tstoll@jsesign.com

101 East Illinois Avenue

Aurora, IL 60505

630-264-4340/Fax 630-264-4341

www.jsesign.com



ELECTRIC & SIGN, INC.
Subsidiary of Trace Illumination Ent., Inc.

Service available: Commercial sign installation, maintenance, service and LED upgrade. Commercial electrical service install, service and maintenance.

Equipment: Crane to 120', Lift/Bucket Trucks to 85', auger, dump truck, scissor lift, and flatbed trailers up to 30'

Areas Served: Greater Chicagoland area and surrounding suburbs - primarily in northern Illinois.

KEYSER

Bill Keyser (CEO)

bill.keyser@explorekeyser.com

Kim Keyser-Clisham (President)

kim.keyser@explorekeyser.com

Nick Lee (Experimental Engineer)

nick.lee@explorekeyser.com

9015 S. Kedzie Avenue

Evergreen Park, IL 60805

866.917.0400 708.876.1227

www.explorekeyser.com



Services Available: Permitting, Installation, service calls, maintenance of digital and static signs

Equipment: Indoor and Outdoor Digital Signage and Menu Boards

Service Area: United States

LEGACY SIGN GROUP

Shaun O'Brien (PRES)

Shauno@legacysigngroup.com

Shaun Ensign (COO)

shaune@legacysigngroup.com

7933 W Hwy 6

Westville, IN 46391

Phone: 219-728-5102

www.legacysigngroup.com



Service Available: Fabrication, Installation, Surveying, Permitting, Consulting, Service, and Maintenance.

Equipment: (1) Service Truck, (1) 85' Elliot Boom, (1) Altec Auger Truck

Service Area: Nationwide - Chicagoland and Indiana

SIGN COMPANIES

LIBERTY SIGNS, LLC

Steve Farnar (GEN MGR)

steve@libertygraphicsandsigns.com

Cell 618-964-4030

P.O. Box 696

Marion, IL 62959

618-993-3344

www.libertycraneandsigns.com

Service available: Sign install, service, and crane work.
Equipment: 50' bucket, 85' Elliott, 17T, 30T & 38T crane
Service area: 60-mile radius



MARTIN SIGN SERVICE, INC.

Andrew Martin (PRES)

andrew@mtco.com

1396 Country Road 1200 E

Metamora, IL 61548

O: 309-367-2475

C: 309-303-4034

www.matinsignservice.com

Service available:
Equipment:
Service area:



MEYER SIGNS

Ron Meyer (PRES)

rmeyer@meyersigns.com

341 Sola Drive

Gilberts, IL 60136

847-844-9880

www.meyersigns.com

Service available: Production, installation and repairs.
Equipment: Service vans
Service area: Chicago and suburbs



MIDWEST SIGN & LIGHTING, INC

Billy D. Brooks (PRES)

Don@midsign.com

Frank Nielsen (VP)

4910 W. Wilshire Blvd.

Country Club Hills, IL 60478

708-365-5555

Cindy@midsign.com

Service available: Sign installation and maintenance
Equipment: Crane and Bucket Trucks
Service area: Greater Chicagoland area, Suburbs and Northwest Indiana

**Midwest Sign &
Lighting, Inc**

SIGN COMPANIES

MONSIBIC, INC.

Kevin Wong (PRES)
 monsibic@gmail.com
 Main Office:
 3401 South Halsted St, 1FL
 Chicago, IL 60608-6774
 Production:
 2710-14 W. Harrison St.
 Chicago, IL 60612
 773-847-2828/Fax 773-847-0088
www.monsibic.net



Service available: Full-Service Sign Shop, Wholesale and Sign permits.
Service area: Chicagoland

NEON ART SIGNS CHICAGO

Michael Shin (Shop Manager)
 neonartchicago@gmail.com
 4752 N Avers Ave
 Chicago, IL 60625
 773-588-5883
www.neonartchicago.com



Service available: Channel letters, Pylon signs, Logo design, neon and LED signs:
Equipment: Accu-cut 4x6, Accu-clinch, Accu-Bond Freedom, Roland VG-540, neon bending equipment
Service area: Chicagoland

NESPER SIGN INC.

Phil Garland (PRES)
 pgarland@nespersign.com
Donna Garland (VP)
Nick Garland (VP)
 4620 J St. S.W.
 Cedar Rapids, IA 52404
 319-366-5312/Fax 319-366-6493
www.nespersign.com



Service available: Full-service Sign Company. Design, fabrication, installation, and Service.
 Fully automated production. In house neon and digital printing, CAD. 100% solar powered plant.
Equipment: 85', 67', 60', 57' crane trucks 35' and 60' service trucks, 2017 Altec Auger truck
Service area: Iowa

NORTH SHORE SIGN

Duane Laska (PRES)
 DuaneL@NorthShoreSigns.com
Kevin Laska (VP)
 KevinL@NorthShoreSigns.com
 1925 Industrial Drive
 Libertyville, IL 60048
 847-816-7020
www.northshoresigns.com



Service available: Custom electric sign manufacturing, service and installation.
Equipment: 90', 65' 62' platform cranes, 85', 65' cranes, 60', 54', 40' aerial ladders, flatbed & trailers, auger 3' x 10', scaffolding, scissors lift.
Service area: Northern Illinois & Southern Wisconsin, Chicago Metro area including City of Chicago

SIGN COMPANIES

OMEGA SIGN & LIGHTING INC.

Carmella Menna (President)

carmela@omegasignchicago.com

Sam Menna (VP of Sales)

sam@omegasignchicago.com

Steve Adamowski (Dir of Service)

100 W Fay

Addison, IL 60101

630-237-4397

www.omegasignchicago.com



Service available: Lighting Retrofits, Sign Retrofits, Sign Repair, Parking lot lights, Building Lights, Interior Lights, electrical services.

Service Area: Illinois, Southern Part of Wisconsin and Northern Indiana

PALDO SIGN COMPANY

Joseph Paldo (OWNER)

joseph@paldosigns.com

John Paldo (OWNER)

john@paldosigns.com

8110 Grand Avenue

River Grove, IL 60171

708-456-1711

www.paldosigns.com

PALDO SIGN COMPANY

Service available: Sales, manufacturing and installation of any type of sign and parking lot lighting.

Installation work for out of town manufacturers.

Equipment: 75ft crane and 2-- 40ft plus bucket trucks

Service area: Chicago and the 6-county surrounding area

PARVIN-CLAUSS SIGN COMPANY

Robert Clauss (PRES)

bclauss@parvinclauss.com

Mary Clauss (Marketing Manager)

MClauss@parvinclauss.com

Brian Newton (VP Sales & Business Development)

bnewton@parvinclauss.com

165 Tubeway Drive

Carol Stream, IL 60188-2249

630-510-2020

www.parvinclauss.com



Service available: All

Equipment: Cranes and assorted service vehicles

Service area: Installation service area includes northern Illinois, southeast Wisconsin and northwest Indiana.

SIGN COMPANIES

POBLOCKI SIGN COMPANY LLC

Kevin Madrzykowski (PRES)

Justin Stuebs (OPERATIONS LEADER)

922 South 70th Street
Milwaukee, WI 53214
414-453-4010

www.poblocki.com

Chicago Location

Katie Conroy (SALES)

kconroy@poblocki.com

Raleigh Location

201 Kitty Hawk Drive
Suite 100
Morrisville, NC 27560

Boston Location

4 Industrial Park Road
Medway, MA 02053
info@poblocki.com



Service available: As a national leader in the architectural signage industry, Poblocki Sign Company creates innovative solutions for exterior, interior, digital and wayfinding signage. We use a collaborative concept-to-completion approach that integrates the design, engineering, fabrication, project management and installation components of your sign project.

Equipment: We have all the equipment needed to perform any signage project.

Service area: United States

PRAIRIE SIGNS, INC.

Andrew Carby (PRES/Owner)

acarby@prairiesigns.com

dbubenik@prairiesigns.com

1215 Warriner Street
Normal, IL 61761

309-452-0463/Fax 309-454-8741

www.prairiesigns.com



Service available: Full design, manufacture, service and install sign company.

Equipment: (2)35' bucket vans; (1)65' Elliott crane; (1)90' Elliott crane; (1)55' auger truck; (2) pick-up trucks; (1) ladder van; (4) trailers

Service area: 90-mile radius of central Illinois

RIGHT WAY SIGNS, LLC

Alex Perry (PRES)

alex@rightwaysigns.com

1134 N Homan Ave,

Chicago, IL 60651

Cell 312-259-7135

773-930-4361

www.rightwaysigns.com



Service available: Right Way Signs of Chicago is a full-service, award-winning sign company located in the Bucktown Neighborhood of Chicago. We specialize in hand painted signs, sign painting, painted murals, but our in-house capabilities include sign fabrication, LED letters and signage, office signs, gold leaf signage large format printing, vinyl graphics, sign installation, sign removal, sign permitting and surveys, project management and custom design. Our fabrication shop also works on very customized and creative signage.

Equipment: 54' roll-to-roll printer, vinyl cutter and 55' Altec Truck Lift, 4x8 CNC Router.

Service area: Chicagoland area & Midwest – National service

SIGN COMPANIES

S & S SIGNS LIGHTING ELECTRICAL

Brian Smallberger (VP FIELD OPS)

office@sslmse.com

4305 N. Main Street

East Peoria, IL 61611

309-692-6994

www.sandslightingmaintenanceco.com

Service available: Sign repair, sign install, retro to LED, all sign work.

Equipment: Bucket trucks

Service area: Central IL



SANFORD AND SIGN INCORPORATED

Scott Bailey (OWNER)

Scott@SanfordSign.com

Linell@SanfordSign.com

162 W Grand Avenue

Elmhurst, IL 60126

O-262 - 448 -1448

M-224 - 276 -1334

www.sanfordsign.com

Service available: Sanford & Sign specializes in field projects including surveys, permit procurement, sign installation and maintenance. Sign installations include vinyl, letter sets (interior and exterior), ground signs (including pylons, monuments and directionals), foundation digging // pouring, face replacements, and lighting trouble shooting and replacement.

Equipment: Flatbed Stake Truck, 42', 52', and 60' bucket trucks, augers, jack hammers, lifting cable, forklift, interior and exterior storage.

Service area: Greater Chicagoland and Milwaukee



SIGNCO, INC.

Tony Morrone (PRES)

tony@signcochicago.com

1327 N. 31st Avenue

Melrose Park, IL 60160

Cell: 708-243-1717

708-865-1717

www.signcochicago.com

Service available: Full-service sign company and national installs

Equipment: Aerials from 30' to 90', support vehicles, bobcat, dump trucks

Service area: 150-mile radius of Melrose Park, IL



SIGN ARTIST INC.

Ed Bartholomew (PRES)

ed.bart@signartistusa.com

Marianna Bartholomew (VP COMMUNICATIONS)

108 E Devon

Bensenville, IL 60106

630-815-5473

www.signartistusacom

Service available: Custom design and installation. ADA signs, entrance and lobby signs, channel letters, LED signs. Color matching, wall graphics, window graphics, vehicle wraps. Precision cut vinyl, large format digital latex printing,

Equipment: 64" HP Latex Printer, Graphtec Plotter, I7 Color Matching

Service area: Chicagoland



SIGN COMPANIES

SIGN PALACE, INC.

Ken Kelly (DIR of OPER)

ken@signpalace.com

68 North Lively Blvd

Elk Grove, IL 60007

847-640-1335

www.signpalace.com



Service available: Truck lettering, digital printing, interior signs, exterior signs, ADA and way finding.

Equipment: 35' bucket truck, install vans, install pick-up trucks

Service area: Chicagoland and southern Wisconsin

TURNROTH SIGN COMPANY, INC.

Eric Turnroth (PRES)

Barry Cox (SLS)

1207 East Rock Falls Road

Rock Falls, IL 61071

815-625-1155

turnrothsign@comcast.net



Design · Manufacture · Install · Service

815-625-1155

Service available: Sale, design, install and maintenance of signs, in-house neon repair and manufacturing, custom vinyl and application, commercial awnings of all types and outdoor advertising displays in Sterling, Rock Falls, Dixon, Morrison and outlying markets.

Equipment: 65' all power crane with ladder and welder; 55' aerial ladder; dump truck and auger

Service area: 50-79-mile radius of Sterling/Rock Fall/Dixon

VAN BRUGGEN SIGNS, INC.

Sam Van Bruggen (PRES)

sam@vbsign.com

William Van Bruggen (SEC/TREAS)

bill@vbsign.com

Joel Van Bruggen (VP, Install/Serv Coord)

joel@vbsign.com

Nina Van Bruggen (ASST SEC/TREAS)

nina@vbsign.com

Brad Werkman (PROJ COORD)

brad@vbsign.com

13401 Southwest Highway

Orland Park, IL 60462

708-448-0826

info@vbsign.com

www.vanbruggensigns.com



Service available: Design, fabrication, installation & service of electric and commercial signs. Permit/variance procurement, site surveys. Custom, neon, architectural, LED, electronic message signs, digital printed graphics, wood signs, vehicle graphics, dimensional letters, LED lighting, retrofits, ADA Architectural

Equipment: 85', 60', & 50' Elliott aerial platform/cranes; 60' Wilkie ladder truck; 34' bucket truck; stake & dump trucks, misc. flat trailers, pickups, skid steer/auger, Gerber CNC router, HP DesignJet latex & Gerber Edge digital printers.

Service area: Chicago metro region, northwest Indiana

SIGN COMPANIES

VISION SIGNS & DESIGN

Robert Zabel (OWNER)

bob@visionsignanddesign.com

2104 Oakleaf St, Unit a

Joliet, IL 60436

815-828-5932

www.visionsignanddesign.com



VISIT...
www.ISA-sign.com

More info...
Membership Listings
Resources
Sign Design Winners

www.ISA-sign.com
www.ISA-sign.com

SIGN PRODUCT MANUFACTURERS & SERVICES

ADMIRAL WHOLESALE SIGN COMPONENTS

Sudena Lambert (WHLSL MGR)
sudena@admiral-wholesale.com
P.O. Box 500
4857 Nash Road
Cape Girardeau, MO 63701
573-651-1727/Fax 573-651-1729
sales@admiral-wholesale.com
www.admiral-wholesale.com



Products: Custom sign cabinets, sign kits, welded/wired cabinets, LED illumination Sign faces (EFI digitally printed sign face), full length extrusion.
Area served: Nationwide

ALTEC INDUSTRIES, INC.

Corporate Office:
2106 South Riverside Road
St. Joseph, MO 64507
Dan Brown (ACCT MGR - ILLINOIS)
dan.brown@altec.com
317-793-0884
www.altec.com



Products: Aerial Devices, Cranes, Digger Derricks for the sign industry.
Area served: Nationwide

AVERY DENNISON

Dane Carignan (Regional Sales Manager)
8080 Norton Pkwy.
Mentor State MI Zip 44060
440-251-5530
Dane.carignan@averydennison.com
www.graphics.averydennison.com



Products:
Areas served:

DAKTRONICS, INC.

Corporate Office:
commercial@daktronics.com
201 Daktronics Drive
P.O. Box 5128
Brookings, SD 57006-5128
888-325-7446
www.daktronics.com



Products: Daktronics designs, develops, manufactures, and tests one of the most extensive product offerings in the industry. We build our products from the ground up at our factories located in the American Midwest. Founded in 1968, our expertise derives from industry experience, a commitment to R & D, and our in-house Product Reliability Lab. Daktronics regional staff, located throughout North America, provide sign companies with on-site demos and site survey assistance to help them successfully sell digital displays. We also offer technical product training, sign legislation support, and an annual expo that focuses on sales strategy.

Areas served: Worldwide

SIGN PRODUCT MANUFACTURERS & SERVICES

ELECTRO-MATIC VISUAL, INC.

James Baker III (RGNL SLS MGR)
Jcbaker3@electro-matic.com
23660 Industrial Park Drive
Farmington Hills, MI 48335
248-622-3684

Brandon Bender
bhbender@electro-matic.com
312-237-0573

www.empvisualsolutions.com



Products: Electro-Matic designs, engineers & manufactures interior and exterior electronic message centers. Available in monochrome, tricolor and full color. Exterior resolutions from 26mm to 10mm and interior as tight as 1.5mm. We also manufacture LED lighting for parking lots, parking garages, canopies, wall packs, billboards & spot lighting.
Area served: International

GEMINI, INC.

Nathan Diehl (SALES) 317-649-1478
nathan.diehl@geminisignproducts.com

Brad Lunning (SALES) 612-803-1663
brad.lunning@geminisignproducts.com
103 Mensing Way
Cannon Falls, MN 55009
507-263-3957
sales@geminisignproducts.com

www.geminisignproducts.com



Products: Dimensional letters in metal and plastic, plaques, changeable copy letters, letter trim, and engraving sheet stock (known as DUETS).
Area served: Nationwide

IDEAL STITCHING & WIRE CO.

A Division of W.R Pabich Mfg.

Cliff Misterra (PRES/OWNER)
cliff@wrpabich.com
2323 N Knox Avenue
Chicago, IL 60639
Phone: 773-486-4141

www.idealstitcher.com



Products: Channel Letter Stapler

INDY IMAGING, INC.

Dave Tegmeyer
1300 W. 16th Street
Indianapolis, IN 46202
317-917-7938
dave@indyimaging.com
patrick.fulnecky@indyimaging.com

www.indyimaging.com



Products:

Area Served:

SIGN PRODUCT MANUFACTURERS & SERVICES

MATTHEWS PAINT

Calvin Rollyson (NATL SLS MGR)

crollyson@ppg.com

Tom Segard (Field SLS REP)

tom.segard@ppg.com

Jamie Franklin (Tradeshaw COOR)

mpcmail@ppg.com

Corporate Office:

760 Pittsburgh Drive

Delaware, OH 43015

800-323-6593/Fax: 800-947-0377

www.matthewspaint.com



Products: Matthews acrylic polyurethane is available in both satin and gloss and various voc levels including our new Ultra Low VOC paints. Matthews also offers a full line of primers, additives, metallic's and pearls that are EPA compliant. Mixing systems are available to make any of our 85,000 colors matched to PMS, SW, vinyl colors and many more.

Area served: USA and Canada

METOMIC CORPORATION

Paul Bernstein

paul@metomic.com

2944 West 26th Street

Chicago, IL 60623

773-247-4716

www.capsandstandoffs.com



Products: Sign standoffs in anodized brushed aluminum and polished chrome. MADE IN AMERICA

Area served: Worldwide

MIRATEC SYSTEMS

Henry Van de Werken (Nat'l Field Rep)

henryv@miratecsystems.com

640 Olive St

St. Paul, MN 55130

800-336-1224

630-864-7491

www.miratecsystems.com



Products: Miratec Systems is wholesale-only manufacturer finished graphics for signs, windows, walls and floors; utilizing the latest cutting-edge technologies. We set the industry standard for backlit graphics (Flex Faces and Vinyl) that will not wash out or have color shift when going from non-illuminated to illuminated. Miratec Systems has pioneered advancements in the sign industry with PureColor Technology®, OLE® online estimating/ordering systems, Color Passport® which ensures consistent precise color matches, on-time guarantees, unmatched warranties, and superior customer service.

Area served: North America

OPTEC DISPLAYS, INC.

Chad Engstrom (DIR SLS CTRL US)

cengstrom@optec.com

Cell 626-252-8333

Corporate Office:

1700 South De Soto Place, #A

Ontario, CA 91761

626-369-7188/Fax 626-369-7858

www.optec.com



Products: Optec Displays, Inc. is a world leader in LED Electronic Message Centers and Lighting products.

Area served: Worldwide

SIGN PRODUCT MANUFACTURERS & SERVICES

SIGNCOMP

Dave Breihof (VP North American SLS)

dbreihof@signcomp.com
606-304-6281

Jeremy Breihof (REG SLS MGR)

jeremyb@signcomp.com
606-839-4474

Brian Vlasich (Sales Representative)

BrianVlasich@gmail.com

Office / Customer Service

3032 Walker Ridge Drive
Grand Rapids, MI 49544
877-784-0405
616-784-0405

www.signcomp.com



Products: Aluminum Sign Extrusion Systems for hingeable and non-hingeable cabinets, vandal covers, snap frames flex tensioning systems, and post and panels. Retro fit systems, radius ends and corners, divider bars, raceways and architectural signage.

Area served: Worldwide

SLOAN LED

Brian Davis

bdavis@sloanled.com

5725 Olivas Park Drive
Ventura, CA 93003
630-945-1157

www.sloanled.com



STEEL ART COMPANY

Charles Blanchard (VP SALES)

charlesb@steelartco.com
189 Dean Street
Norwood, MA 02062
800-322-2828 Ext. 501

www.steelartco.com



Products: Exclusively for the trade. Exclusively for the trade. 3D and direct printing is now available. Solid/Channel style letters in all metals. Illuminated and laser cut acrylics. Halo and front light LED, Trim Capless front lit letters. Raster Braille, CNC machined and acrylics, Custom and standard finishing. In house Powder Coating.

Area Served: We ship globally.

SULLAWAY ENGINEERING, INC.

Michael F. Sullaway (P.E., CEO, OWNER & PRIN ENGR)

projectmanager@sullawayeng.com
P.O. Box 28789
San Diego, CA 92198
858-312-5150

www.sullawayeng.com



Products: Provide stamped drawings and calculations for the sign and awning industry.

Area served: Licensed throughout the US

SIGN PRODUCT MANUFACTURERS & SERVICES

THINKSIGN

Brian Lappin (SALES)
 brian.lappin@thinksign.com
 5680 Shepherdsville Rd
 Louisville, KY 40228
 502-909-5976
www.thinksign.com



Products: Founded in 1998, ThinkSIGN is the designer and manufacturer of one of the finest on-premise LED signs available. Our superior design, stringent sourcing and quality control coupled with industry-leading software and support allow us that claim. Headquartered in Louisville KY, ThinkSIGN has partners in all 50 states and a dedicated team of professionals to support any project large or small.

WATCHFIRE SIGNS

David Wuellner (Sales Director – Central Region)
 David.Wuellner@watchfiresigns.com
Chris White (Northern Illinois Territory Manager)
 Chris.White@watchfiresigns.com
Faye Rowell (Southern/Central Illinois Territory Manager)
 Faye.Rowell@watchfiresigns.com
 1015 Maple Street
 Danville, IL 61832
 800-637-2645
www.watchfiresigns.com



Products: Watchfire Signs designs and engineers the best looking, most durable outdoor LED signs and digital billboards to help businesses and organizations increase visibility and drive growth. Headquartered in Danville, Ill., Watchfire has manufactured electric signs since 1932 and LED signs, using meticulously sourced components from around the world, since 1998. Our products include indoor and outdoor LED displays, fixed-digit and virtual scoreboards, gas price signs and digital billboards.

Areas served: Nationwide

Social Medi Links:

- Facebook – <https://www.facebook.com/WatchfireSigns>
- Twitter – <https://twitter.com/WatchfireSigns>
- LinkedIn – <https://www.linkedin.com/company/watchfire-signs-by-time-o-matic>
- Instagram – <https://www.instagram.com/watchfiresigns>

WEITZ SIGN COMPANY

Mike Weitz (PRES)
 2400 Kerper Boulevard
 Dubuque, IA 52001
 563-556-5316
 Fax 563-582-8064
 mike@weitzsign.com
www.weitzsign.com



Products: Wholesale channel letters, flat cut letters, custom fabrication, extruded signs, architectural signs, neon.
Area Served: Nationwide

SIGN PRODUCT MANUFACTURERS & SERVICES

WILKIE MFG., L.L.C.

Bryan Wilkerson
Darrel Wilkerson Jr.
Bruce Wilkerson

P.O. Box 82067
Oklahoma City, OK 73148-0067
2640 NW 2nd Street
Oklahoma City, OK 73107-6310
405-235-0920/Fax 405-236-3324
sales@wilkiemfg.com

www.wilkiemfg.com

Products:

Wilkie Model 52XLR Remote Control Service Crane, Wilkie Model 60 Ladder service ladder, Wilkie Model 72R Remote Control Crane, Wilkie Model 58XRB Remote Service Crane, Wilkie Model 65XRB Remote, Wilkie offers a complete line of Wilkie built bed, service bodies, outriggers and custom rigging capabilities to match equipment to each customer's needs as we build each unit specifically for the Sign Industry.

Area served: Worldwide

Wilkie Mfg., L.L.C.

WORLD WIDE SIGN SYSTEMS, INC.

Mike Lawrenz (VP of Operations)

MLawrenz@wvsign.com

Jeremy Leitzke (Sales)

jleitzke@wvsign.com

P.O. Box 338
446 North Cecil Street
Bonduel, WI 54107
800-874-3334

www.wvsign.com



Products: Exclusively wholesale manufacturer of electric signs, pylons, monuments, custom signs, architectural signs, formed or flexible faces, channel letters, routed products and digital prints.

Area served: North America & Caribbean

YORSTON AND ASSOCIATES

William Yorston (Reg Sales Manager)

6 Bette Lane
Hellertown, PA 18055
610-838-8943
yorsassoc@aol.com

Adam Yorston (SLS REP)

651 Nesting Lane
Middletown, DE 19709
302-415-1950
adamyorston@gmail.com

Brian Vlasich (CNTRL MDWT REP)

12 Idyllwild Court
Iowa City, IA 52245
616-540-1843
brianvlasich@gmail.com

Area served: Central Midwest

www.yorstonandassociates.com

YORSTON & ASSOCIATES

SIGN SUPPLY DISTRIBUTORS

A & C PLASTICS

Marshall McQuien (VP of Sales)

jm@acplastics.com

Sean Carroll (Asst Sales Mgr.)

sean@acplastics.com

Garret Hohman (Dir of Business Dev)

garret@acplastics.com

Warehouse:

3801 W. 25th Avenue
Schiller Park, IL 60176
713-645-4915

Mailing & Corporate Office:

6135 Northdale Street
Houston, TX 77087
713-358-6322

www.acplastics.com



Products: A&C Plastics is the nation's premier plastics distributor boasting a very large in-stock inventory of plastic sheeting, including, but not limited to, acrylic, polycarbonate, PVC and HDPE. A&C specializes in stocking colors, oversize sheets and thick gauge material.

Area Served: Local delivery within the greater Chicago area. Nationwide shipping available.

EASTERN METAL SUPPLY

Andy Fasiska (Vice President)

afasiska@easternmetal.com

Chris Wiehardt (Inside Sales Manager)

cwiehardt@easternmetal.com

Greg Gregor (Outside SLS)

ggregor@easternmetal.com

Mike Brown (Marketing and Sales MGR)

mbrown@easternmetal.com
2931 Elm Point Industrial Drive
St. Charles, MO 63301
888-822-6061
800 343 8154 x2202

www.easternmetal.com



Products: Full line distributor of aluminum extrusions and sheet products for the sign industry including sign frames, raceways, flex-face signage, retainers, channel letter coil, ACM panels, standard aluminum extrusions as well as awning shapes and architectural shade systems.

Area Served: Northwestern United States into WV, PA & NY; Canada

SIGN SUPPLY DISTRIBUTORS

MID-WEST SIGN SUPPLY

Harry Niese (CHRMN)

Todd Niese (PRES)

Jim Murphy (SLS)

jmurphy@midwestsignsupplyco.com

Mike Dunn (SLS)

mdunn@midwestsignsupplyco.com

Darrell Davis (SLS)

Mike Milano (SLS)

Jim Steele (SLS)

Wally Zmuda (SLS- Roland Tech)

Jennifer Bercier (ADMIN)

info@midwestsignsupplyco.com

5521 North Lynch Avenue

Chicago, IL 60630

773-588-0523

www.midwestsignsupplyco.com



Products: Complete inventory for all sign company needs

Area Served: Illinois, Indiana, Iowa, Michigan and Wisconsin

TUBELITE COMPANY

Tom Denton (Sales Manager)

6048 W. 79th Street, Bldg 53, Ste 6048

Indianapolis, IN 46278

tdenton@tubelite.com

317-352-9366

www.tubelite.com



Products: Supplies, Equipment, Experience. Tubelite is your one stop supplier representing the finest manufacturers in the Sign Industry. With 10 fully stocked warehouses nationwide we are ready to be your #1 supplier.

Area Served: From our Indianapolis location we service Illinois, Wisconsin and Indiana.

WENSCO SIGN SUPPLY

Richard Montgomery (IL BR MGR)

rmontgomery@wensco.com

Ray Sowinski (SLS REP)

rsowinski@wensco.com

Mark Holwerda (SLS REP)

markh@wensco.com

Craig Gray (SLS REP)

cgray@Wensco.com

936 West Fullerton Avenue

Addison, IL 60101

800-253-1569

Tony Walkons (SLS MGR)

twalkons@wensco.com

Ryan Luke (Marketing MGR)

rluke@wensco.com

800-253-1569

Corporate Office

P.O. Box 375

Belmont, MI 49306

www.wensco.com



Al Trivette (IA BR MGR)

atrivette@wensco.com

John Campbell (SLS REP)

jcampbell@wensco.com

Jon Himes (SLS REP)

jhimes@wensco.com

8650 Northwest Boulevard

Davenport, IA 52806

800-253-1569

(AI) Ext 3001 / (John) Ext 3009

Products: Distributor of a full line of sign products to the sign industry.

Area served: Michigan, Ohio, Indiana, Illinois, Iowa and Wisconsin

MANUFACTURER REPRESENTATIVES

POWER EQUIPMENT LEASING COMPANY

Steve Schroeder (PRES)

Tracy K. Schroeder (VP)

Mark Gehrt (COO)

605 Anderson Drive
Romeoville, IL 60446
815-886-1776

steve@powerequipmentleasing.com

tracy@powerequipmentleasing.com

mark@powerequipmentleasing.com

carol@powerequipmentleasing.com

www.powerequipmentleasing.com



Companies represented:

Aerial Lifts, Cranes, Digger Derricks – Elliott Equipment Company, Time/Versalift, Van Ladder — Utility Bodies and Boxes — Brand FX Fiberglass Bodies, Knapheide Manufacturing, Dakota Bodies and RC Industries.

Area served: Midwest

WALTER PAYTON POWER EQUIPMENT

Mike Noonan

930 W. 138th Street
Riverdale, IL 60827
708-656-7700

mnoonan@wppecrane.com

www.wppecrane.com



Companies represented:

New and pre-owned equipment from leading manufactures including Manitowoc, Grove, National, Tadano Mantis, Manitex, Xtreme and Talbert including parts and service.

HONORARY MEMBERS

JAMES M. BRUSEK

1212 W. Sherwin Avenue
Chicago, IL 60626-2218
773-262-8655/Fax 773-262-8663
Mobile: 773-263-4726
jmbrusek@GMAIL.COM

JACK GESELL

Jack Gesell
3617 S 52nd St
Greenfield, WI 53220
414-344-8167
gesellreps@gmail.com

CHERYL GRATE

4044 West McDonough
Joliet, IL 60431
815-729-9700
cgrate@sbcglobal.net

JACK HALLMAN

W6302 County HWY I
Minong, WI 54859
715-466-5478
nicklenards@centurytel.net

DON HARKINS

Harkins Sign Industries
1939 Waukegan Road
Suite 300
773-447-4100
don@harkinssigns.net

TERRY HOPKINS

200 Cevera Drive
Dunedin, FL 34698
727-474-5708
www.alohaholdings.net
alohaterry@tampabay.rr.com

EDDIE LARSEN

114 Amanda Court
Aiken, SC 29803
803-270-9162
elarsen3000@gmail.com

PAUL TYLMAN

501 South Park Street
Roselle, IL 60172
630-865-6971
ptylman@aol.com

RETIREE MEMBER

ROBERT B. SCADRON**Scadron Outdoor Advertising**

1015 W. Grand Avenue
Chicago, IL 60642-6692
312-666-7500
rbscadron@scadron.com
www.scadron.com



INTERNATIONAL SIGN ASSOCIATION

www.signs.org

SERVING THE
SIGN, GRAPHICS
AND **VISUAL**
COMMUNICATIONS
INDUSTRY

Resources from the International Sign Association



www.signexpo.org.

<https://signresearch.org/www.signs.org>

International Sign Association

signs.org/insights.

Visit www.signs.org/online for more information.



Resources from the Illinois Sign Association

ISA WEBSITE ISA site www.isa-sign.com displays our membership directory, past issues of our newsletter-iMAGES and other information locally from our Association.

ISA FACEBOOK PAGE

Check in on our Facebook page and post information about your company, some key projects, successful installations, company news. It's our page to share with both members and the general public on signage in Illinois. <https://www.facebook.com/Illinois-Sign-Association-121149484619637/>

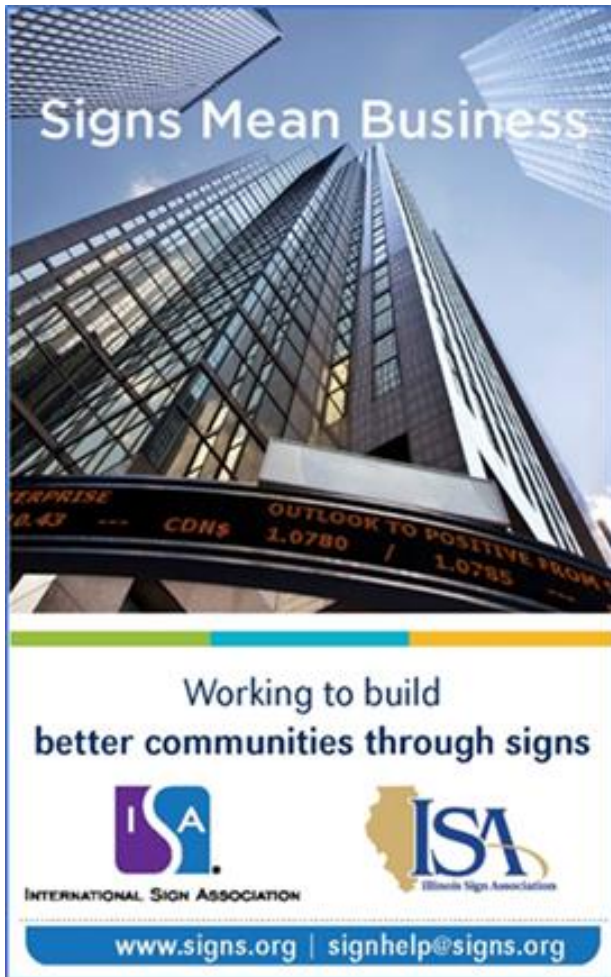
ISA Promotional Video

This is the ISA! <http://www.isa-sign.com>

2022 Membership Directory

The Illinois Sign Association was founded in 1969 to elevate and promote the standards and professionalism of the custom electric sign industry in sales, manufacturing, and service.

The Illinois Sign Association is the leading resource for sign, graphics, and visual communication industry professionals in meeting the needs of their clients and the communities they serve.



PROUD TO BE A STATE AFFILIATE OF THE...



INTERNATIONAL SIGN ASSOCIATION

Illinois Sign Association

8 W. Monroe Street -- Suite 707 -- Chicago, IL 60603
office@isa-sign.com -- 312-881-9920 -- www.isa-sign.com